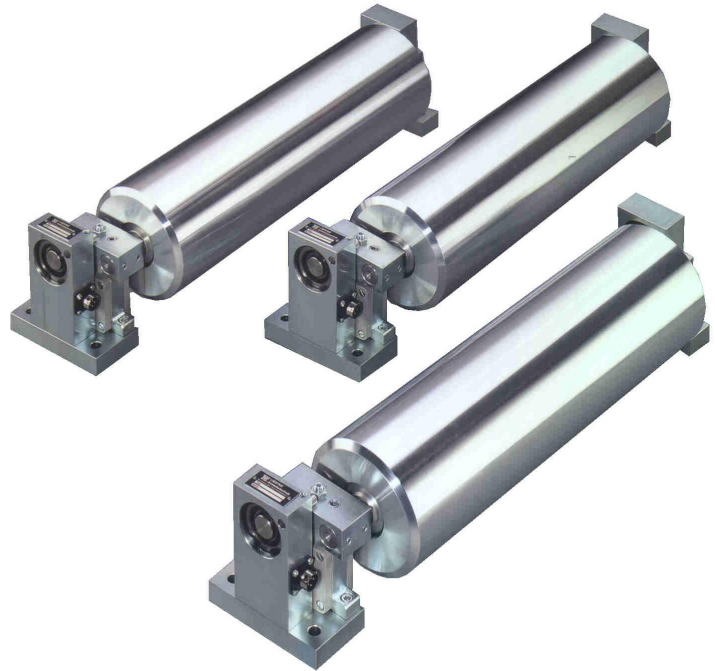




**Traction measuring
Traction measuring
stations
with integrated measuring
roller
one-sided measurement**



To measure, regulate and control tractive forces in flexible material webs like e.g. plastic foils, metal, paper, textiles etc.

The process engineering requires to measure the web tractions in running webs. The traction measuring shall be made pathless, so that the web lead will not be changed. The electrical output signal serves as traction display and at the same time as regulating factor to the driving system.

Traction measurements approved themselves when controlling winders and unwinders (also twin and unroll stations with automatic cutting and laying systems) and when controlling pneumatic brakes which are activated via an EP-converter.

**Technical data
Type KM ... G2**

measurement range	1:20
repeating accuracy	± 1%
rated voltage	5V
max. voltage	10V
measuring signal at 5V and nominal load	approx. 6.5 mV
impedance of the DMS-bridge	350 Ω
temperature coefficient	2µV/K
operating temperature	-10...+80°C
round connector type 4 poles	UTG 10-4

Load cell	KM2	KM4
nominal measuring force	100N	500N
overloadable up to	1000N	5000N