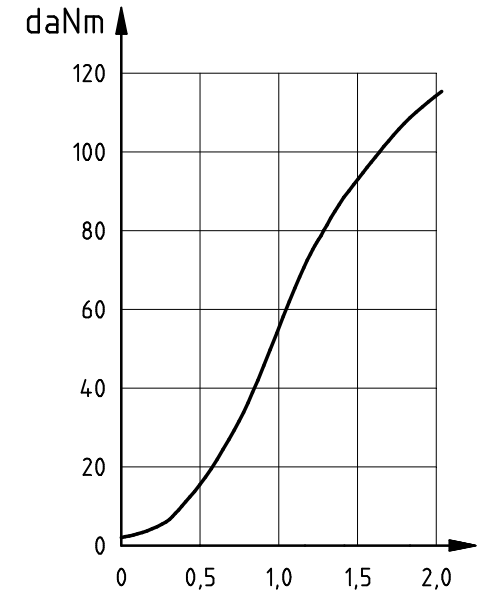
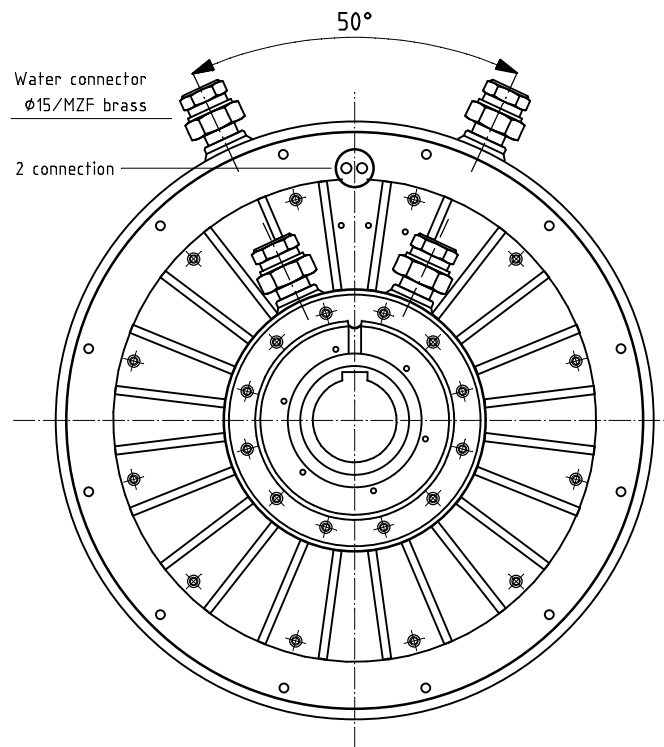
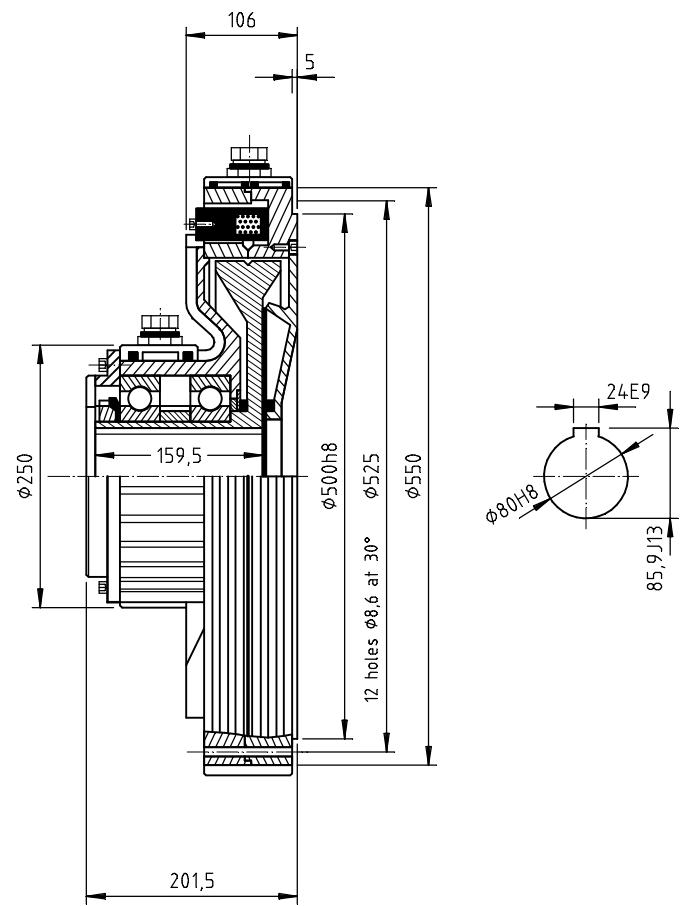


A
B
C
D
E



In order to avoid magnetic leakage flux and to achieve a good heat removal, non-ferrous metals should be used for installation or attachment of auxiliary components (not for drive shaft).

Only applicable for horizontal shaft position !

dimensions and specifications subject to change

rated torque	residual torque	field values			resistance at 20°C	operating times		max. admissible power loss			mass moment of inertia		weight
		maximum values	rated current			t _{on} [ms]	t _{off} [ms]	0 min ⁻¹	1000 min ⁻¹	2000 min ⁻¹	ext. rotor	int. rotor	
M _{max} [Nm]	M _{res} [Nm]	P [W]	U [V]	I _N [A]	R [Ω]	t _{on} [ms]	t _{off} [ms]	P _v [W]	P _v [W]	P _v [W]	J [kgm ²]	J [kgm ²]	m [kg]
1000	10	200	24	1,7	20	5000	4600	10 000	-	-	-	0,81	160

Wie recommend the use of a flow indicator to control the cooling water

water cooling
 required volume of water: V= 5,5 l/min
 water temperature 18° C
 water pressure app 3 bar
 pH- value < 8