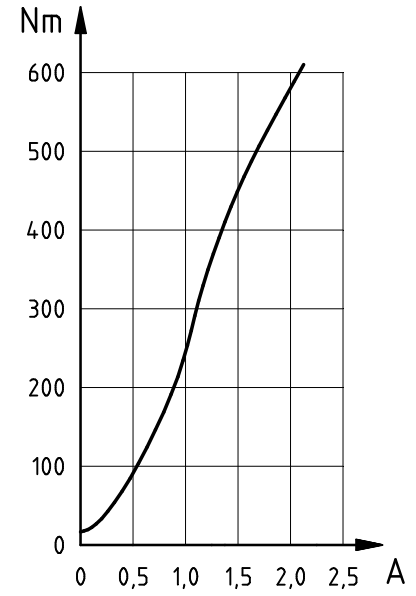
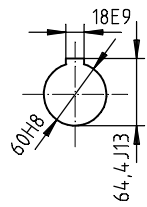
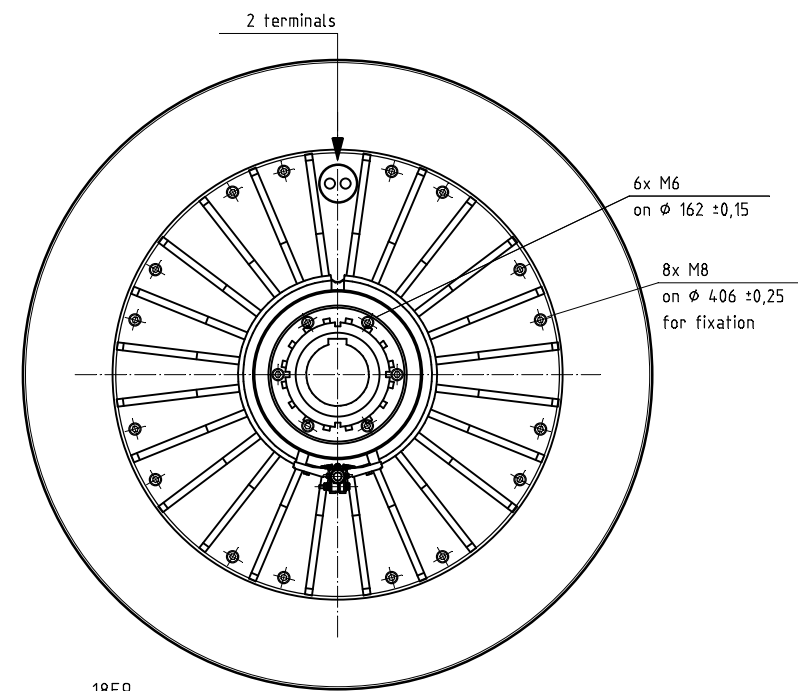
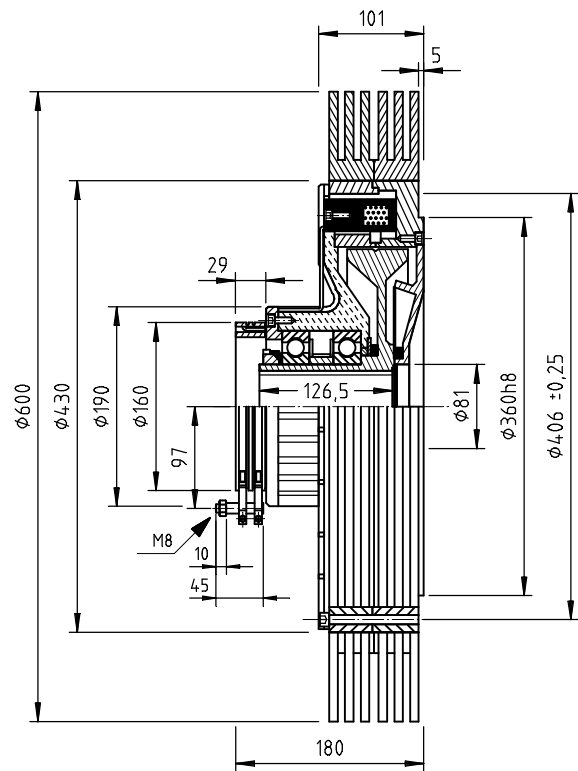


A
B
C
D
E
F



In order to avoid magnetic leakage flux and to achieve a good heat removal, non-ferrous metals should be used for installation or attachment of auxiliary components (not for drive shaft).
dimensions and specifications subjekt to change

Only applicable for horizontal shaft position !

rated torque	residual torque	field values			resistance at 20°C	operating times		max. admissible power loss			mass moment of inertia		weight	
		maximum values	rated current			t _{on} [ms]	t _{off} [ms]	0 min ⁻¹	1000 min ⁻¹	2000 min ⁻¹	ext. rotor	int. rotor		
M _{max} [Nm]	M _{res} [Nm]	P [W]	U [V]	I _N [A]	R [Ω]			P _v [W]	P _v [W]	P _v [W]	J [kgm ²]	J [kgm ²]	m [kg]	
500	5,0	55	24	1,7	11	3000	2750	1000	14,20	1600	2,00	0,33	73	
								1800 *	3000 *	- *	3,32 *			93 *