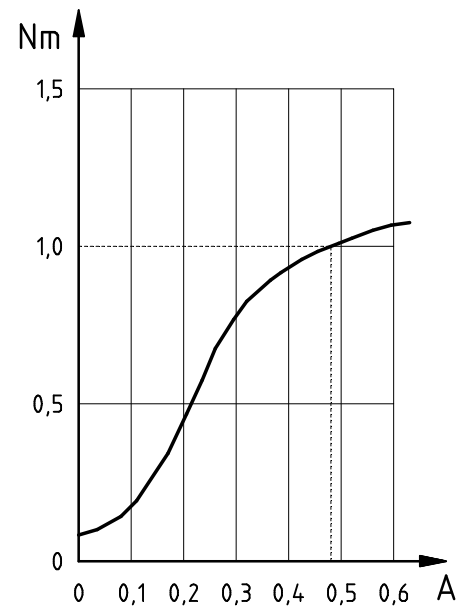
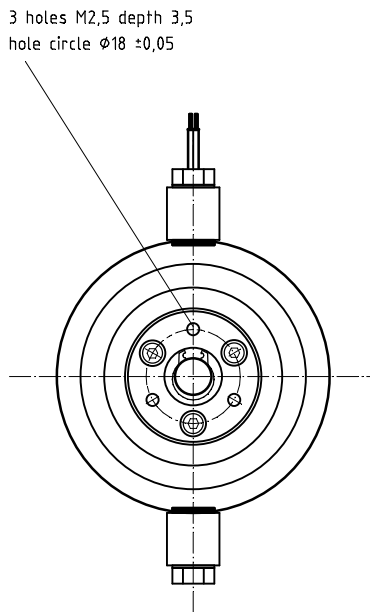
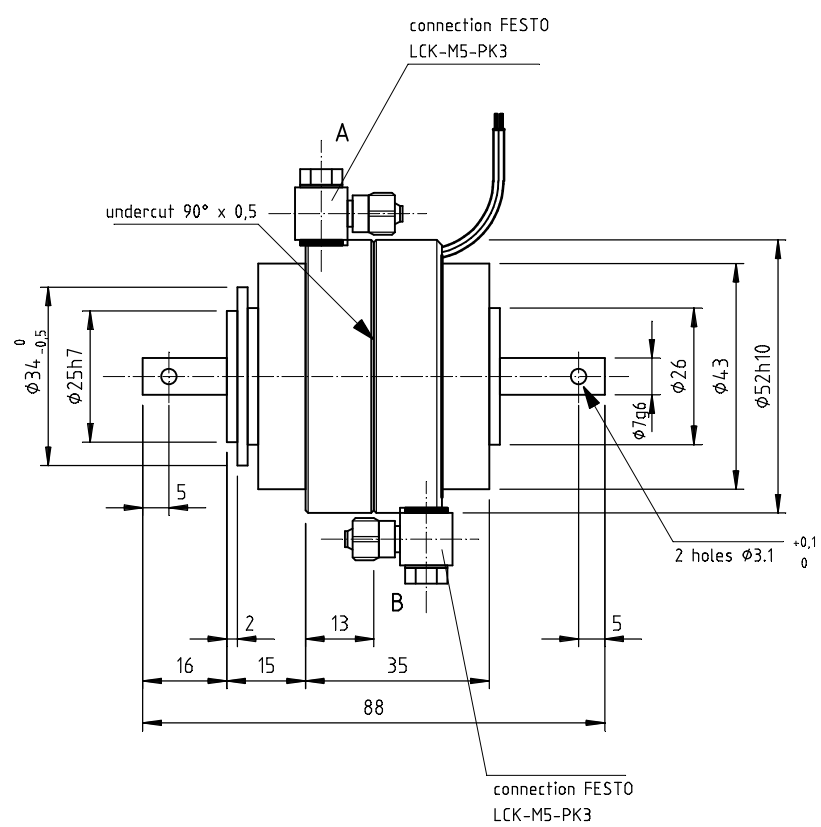


A
B
C
D
E
F



A Forced air inlet
B Forced air outlet

Forced air cooling:
dry, oilfree, filtered air
pressure 0,5 bar

note :
In brake applications, the
drum- type rotor is blocked!

Only applicable for horizontal shaft position !

In order to avoid magnetic leakage flux and to achieve a good heat removal, non-ferrous metals should be used for installation or attachment of auxiliary components (not for drive shaft).

dimensions and specifications subjekt to change

axial force is inadmissible		admissible max. radial force:		N	
max. admissible power loss		mass moment of inertia		weight	
0 min ⁻¹	1500 min ⁻¹	3000 min ⁻¹	ext. rotor	int. rotor	
P _V [W]	P _V [W]	P _V [W]	J [kgm ²]	J [kgm ²]	m [kg]
50	50	50	-	2,5·10 ⁻⁶	0,60

rated torque	residual torque	field values			resistance at 20°C	operating times		max. admissible power loss			mass moment of inertia		weight
		maximum values	rated current			t _{on} [ms]	t _{off} [ms]	0 min ⁻¹	1500 min ⁻¹	3000 min ⁻¹	ext. rotor	int. rotor	
M _{max} [Nm]	M _{res} [Nm]	P [W]	U [V]	I _N [A]	R [Ω]	t _{on} [ms]	t _{off} [ms]	P _V [W]	P _V [W]	P _V [W]	J [kgm ²]	J [kgm ²]	m [kg]
1	0,02	12	24	0,48	54	70	65	50	50	50	-	2,5·10 ⁻⁶	0,60